

Multif[®] R5000Color Paperless Recorder

Description

The R5000 series paperless recorder is a kind of the Multif[®] intelligent instrument family. It is the solid-state replacement for traditional paper chart recorders.

The recorder offers real-time display of data on a color LCD display and data storage on flash memory. The R5000 has 1~32 universal analog inputs for direct current and voltage signals, thermocouples and resistance thermometers. Sensor type and measurement range are freely configurable. Up to 32 relays is provided to output alarm information.

Original appearance design, superior hardware quality, perfect software function and reliable mechanical framework make this instrument more cost-effective. In particular, the function of knob operation is a revolution at instrument domain.



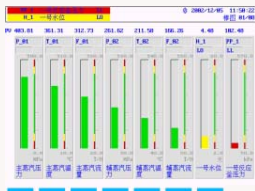
The R5000 recorder can be applied to :

- Chemical processing
- Petroleum processing
- Metal processing
- Power generations
- Production of fine chemicals and pharmaceuticals
- Food and beverage processing
- Environmental monitoring
- Manufacturing assembly areas
- Wastewater monitoring and recording
- Heat treating etc.

Key Screen



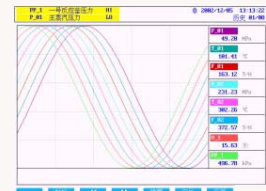
Overview display



Bar graph



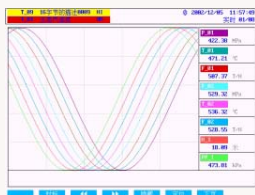
Digital display



Historical trend



Alarm summary



Real-time trend



AI configuration



System configuration

Main Features

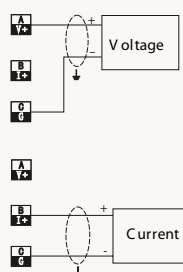
More channels	Up to 32AI channel, all universal input
Large Storage	32M (up to 72M) bytes flash memory to storage process data
Removable storage device	CompactFlash memory card available
Colorful screen	Rich display and well-design operation interface

Rich communication interface	RS-232C, RS-485 and Ethernet communication interface are provided
Perfect flux models	6 Flux models provided: uncompensated, common gas, overheated steam, saturated steam, linear pressure compensation and linear temperature compensation
Various reports	Daily, monthly flow accumulation or heat accumulation reports of every channel are available.
Rate alarm	High and low rate-of-change limits are offered besides normal alarm limits
Broken sensor	When thermocouple burns out, the value could be upscale, downscale or hold.

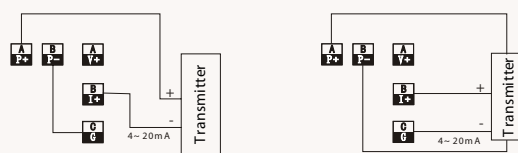
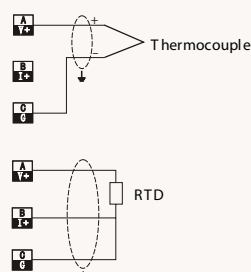
Main Specification

Analog Input	universal input: Voltage: 0~5V, 1~5V, 0~20mV, 0~100mV, -10~10V; Thermocouple: B, E, J, K, S, T, N, R, WRe5-26; Current: 0~10mA, 4~20mA; RTD: Pt100, Cu50;
Digital output	32 output relay, 250VAC, 3A (resistive load);
Totalizer	Up to 32 channels
Transmitter power supply	24V DC 50mA, short-circuit proof (optional)
Communications	Media: RS-232 & RS-485; 10M Ethernet Baud rate: 1200, 9600, 19200, 57600bps;
Sampling period	1s
recording time	Recording interval: 1/2/4/5/6//8/12/15/24/30/36/48s, 1/2/4/5/10/30, 1/2/4h Recording interval: 1s recording time 2 days e.g.: If 32 traces and 32M bytes memory
Accuracy	Current signal : 0.2% F.S.; Voltage signal: 0.1% F.S.; Thermocouple: 0.2% F.S.; RTD signal: 0.1% F.S.; CMRR > 120dB; Noise Rejection > 50dB (Series mode);
Power supply	85V ~ 264VAC; 47~63Hz
Power consumption	Approx. 50 VA
Screen	Color Resolution: 640 X 480 pixels
Ambient conditions	Operation: Temperature: 0 to 50°C Relative Humidity : 10 to 85% RH (no condensation) Transportation and storage: Temperature : -20 to 60°C Relative Humidity : 5 to 95% RH (no condensation)
Dimensions (mm)	Bezel Size: 288×288 mm Panel Depth: 240 mm Panel cut out: 280×280 mm

Connection



Analog Input Connection



Transmitter Power Supply Connection



Delight Supply Co., Ltd.
128/74 Phayathai Plaza Building, 7th Floor, Phayathai Road, Thung-Phayathai,
Radthavee, Bangkok 10400 Thailand
Tel : (662) 612-9435-6, Fax: (662) 612-9437

<http://www.supcon.com>
<http://www.delightsupply.com>
E-Mail : sales@delightsupply.com